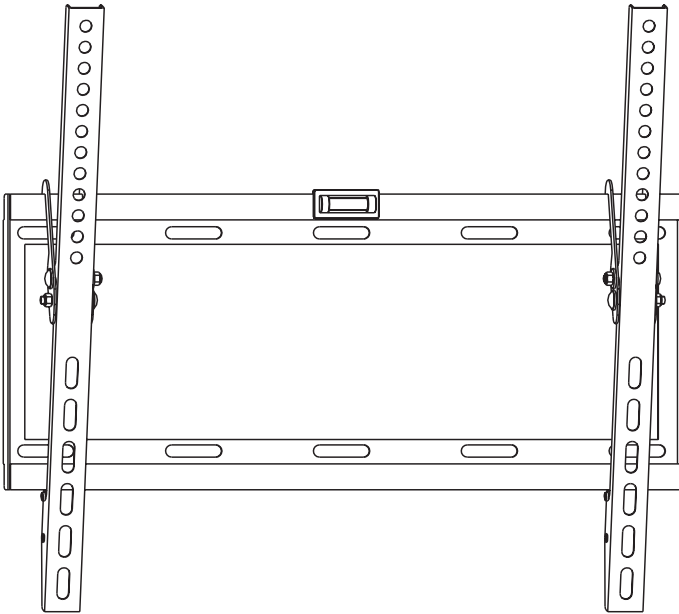




# 32"-55" FLAT SCREEN TILT WALL MOUNT BRACKET



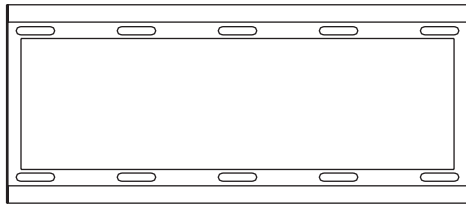
650311

**VESA**  
75x75  
100x100 200x100  
200x200 400x400

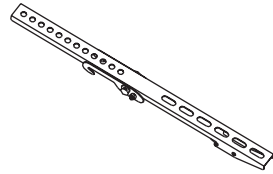
MOST  
**26"-55"**  
TVs

  
Rate d  
**45kg/99lbs**

**INSTALLATION MANUAL**



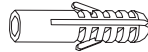
wall mount (x1)  
A



TV plate (x2)  
B



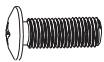
ST6.3x55 (x4)  
A



concrete anchor (x4)  
B



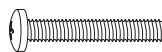
D6 washer (x4)  
C



M6x30 (x4)  
D



M8x30 (x4)  
E



M8x50 (x4)  
F



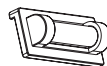
D8 washer (x4)  
G



small spacer (x4)  
H

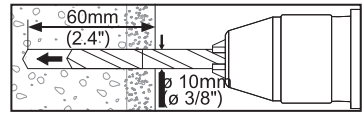
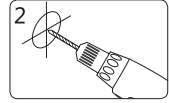
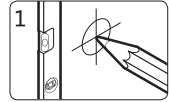
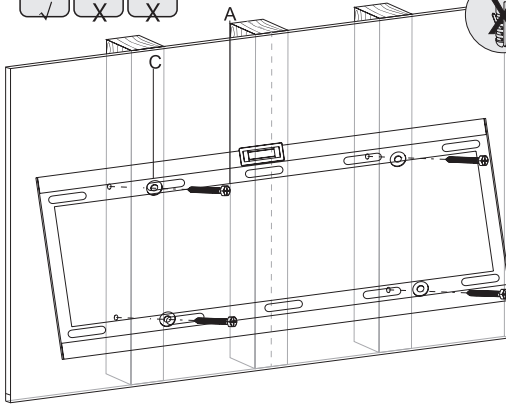
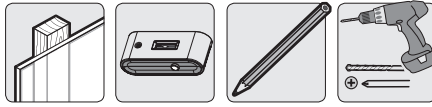


big spacer (x4)  
I

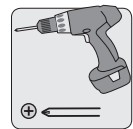
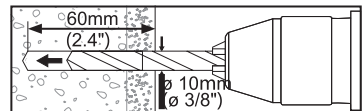
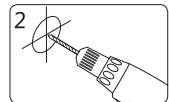
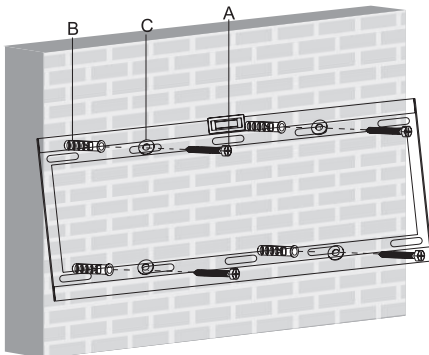
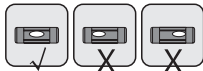


bubble level(x1)  
J

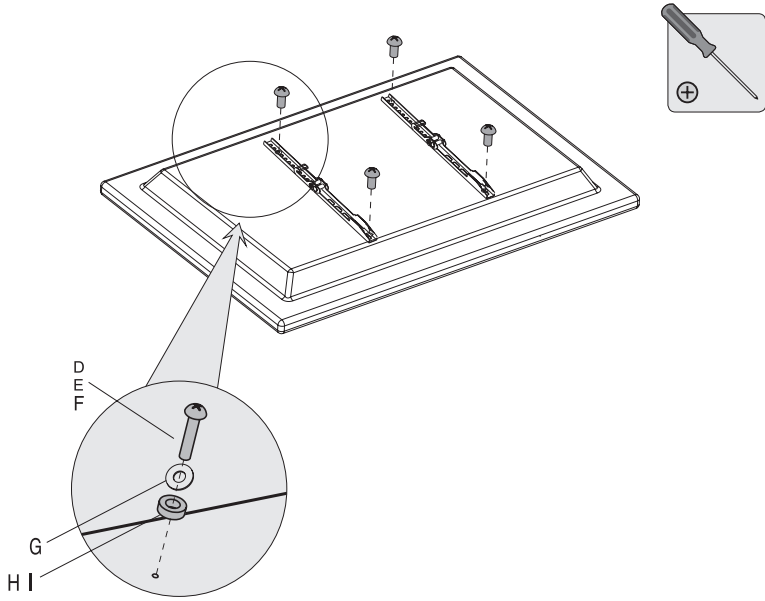
# 1.1



# 1.2



2.



3.

